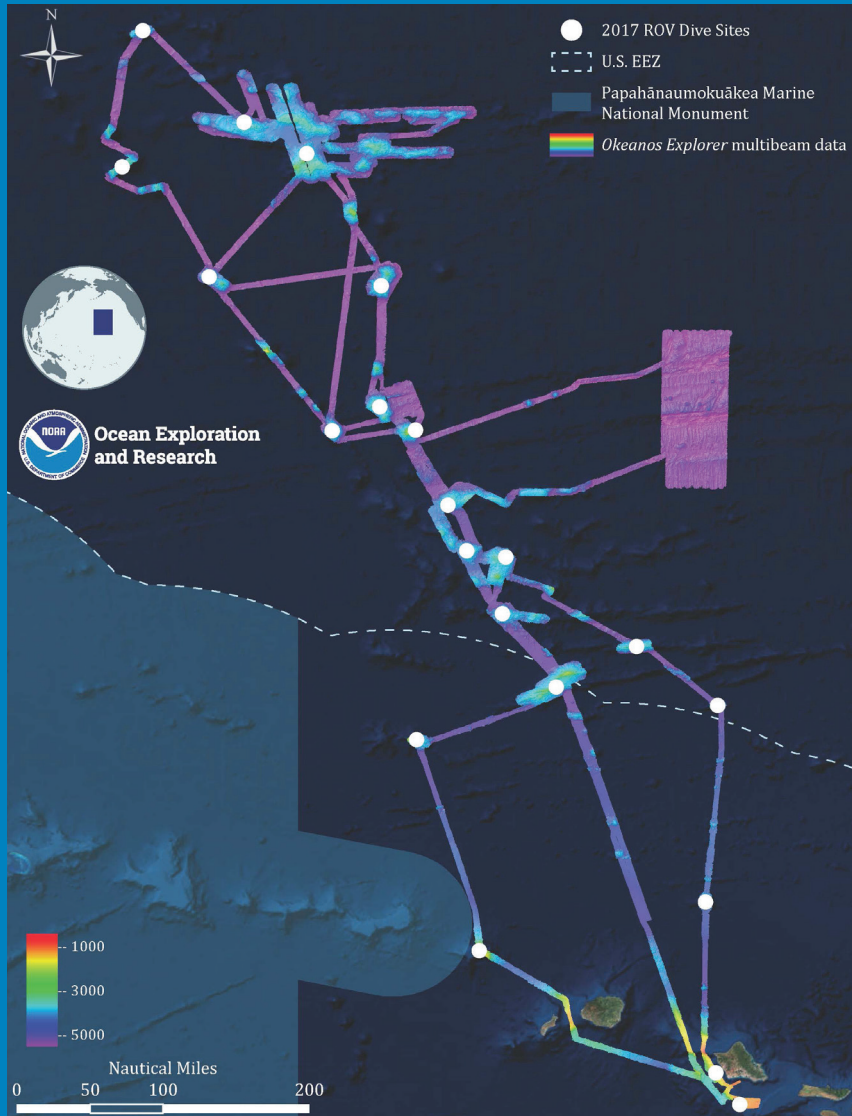


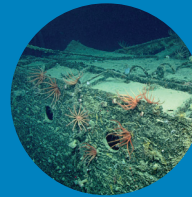
Deep-Sea Symphony: Exploring the Musicians Seamounts

NOAA Ship *Okeanos Explorer*, August 8 - 31 and September 6 - 30, 2017

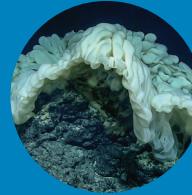
<http://oceanexplorer.noaa.gov/okeanos/explorations/ex1708/welcome.html>



Overview map showing seafloor bathymetry and ROV dives completed during the Deep-Sea Symphony: Exploring the Musicians Seamounts expedition.



Characterized the USS *Baltimore* by thoroughly documenting the wreck, inspecting the vessel degradation, and documenting the associated biological organisms.



Third known observation of a large, yet undescribed, glass sponge at Schuman Seamount, that is only known to exist in the Northwestern Hawaiian Islands. This observation in the Musicians Seamounts suggests connectivity between the two regions, an important objective of this cruise.



Conducted 16 live telepresence interactions with various groups engaging over 550 individuals including science and technical conferences, visitors at a science museum in Louisiana, partner agencies, and students at Exploration Command Centers.



88,600+ square kilometers of seafloor mapped



22 ROV dives at a depth range of 290 to 3,854 meters



18 high-density deep-sea coral and sponge communities documented



142 biological and 31 geological samples collected



95 international scientists participated through telepresence



387,000+ live video views